



# BERRIMA DISTRICT HISTORICAL & FAMILY HISTORY SOCIETY Inc.

Founded 1960

Located in the Wingecarribee Shire,  
Southern Highlands of NSW

ABN 29 362 616 937

## NEWSLETTER

No 591 April 2026

### From the President's Desk

While oil has been the headlines in Australian media lately with no shortage of discussions about petrol wherever you turn, Queensland is home to the Taroom Trough, a vast oil reserve said to be as large as Singapore. Australia, often recognized as the world's leading supplier of gold, also holds beneath its surface a treasure trove of minerals like lithium, copper, titanium, lead, and zinc. Thanks to modern mining technology, these resources are now more accessible than ever.

Each of these minerals plays a crucial role in creating the comforts we rely on today. From our phones and laptops to the electronics in our cars and airplanes, these innovations would have seemed unimaginable to the early settlers, for whom even electricity was a distant dream. Life for those pioneers moved at a much slower pace with progress often demanding years of hard work for even, comparatively, modest achievements.

Imagine what it must have taken, two centuries ago, to build impressive family homes like 'Browley,' the district's oldest surviving house, where, in its grounds the large barn was constructed stone by stone through sheer manual effort.

Our planned tour of three historic properties, including 'Browley,' all conveniently located just a stone's throw from each other promises to be a day for admiring the

exceptional quality of these heritage buildings and the skills of the tradesmen who built them. For details on how to book your place see page 2.

Read about the adventures of Cosh and Roxburgh, our determined history detectives, as they attempt to unravel the mystery of Meryla Pass. Even today, the origin and meaning of the name Meryla remains elusive. Dive into pages 5 to 7 for more.

It's well-known that convicts endured grueling sea voyages before arriving in the young colony, to then face uncertain futures. While many of us have followed the recorded life stories of some of these individuals, how much do we really know about their daily lives?

Rosemary Rope will be joining us to share her research into the clothing worn by transported convicts. Was an Easter bonnet ever brought over? Rosemary will reveal all at our April General Meeting. See page 3.

Want to have a say in how our Society operates? Have a read of the proposed changes to our constitution on page 4. We'll vote on adopting them right before our May General Meeting.

Sadly, I regret to inform you of the passing away after a long illness of Harold Wall, who since 2014 was a dedicated volunteer at our museum where he regularly did duty and also served as a member of the Museum Sub-committee.

**Stuart Handley**

### GENERAL MONTHLY MEETINGS 2026: SPEAKERS

**APRIL 2026: Thursday 23 April at 2:00pm, Civic Centre Theatrette, Moss Vale**  
Rosemary Rope speaking about her latest research/book *Female Convict Threads*

**MAY 2026: Thursday 28 May at 10:30am, Civic Centre Theatrette, Moss Vale**  
Dennis McManus with *The Wonderful Heritage of Wingecarribee Shire and its Protection*

**MORNING/AFTERNOON TEA** served after the meeting and talk



## Moore Memorable Musings



### WHO DO YOU REALLY THINK YOU ARE?

Being involved in a Historical Society such as this, we are very interested in names.

What were we named? I don't mean being called *Boofhead* or *Lame-brain*, but after your parents had christened you *Jimmy*, you've been called many other names in your lifetime.

We were all at one time *babies*, kicking and screaming into this world. Soon we realise we were called a *toddler* and still very reliant on being nurtured. When we accept being a *child* then we can leave the safe nest called home and become a *student*. Probably you would also be a *teenager*.

Some students are students forever, especially in the academic world. There they are labelled for the job they do.

We like to attach ourselves to another person and you are nominally a *partner*.

Most of us get married and are called, among other things, a *husband* or a *wife*. If nature has its way, as it often does, then you are called a *parent*. If you're lucky enough, the children you have delivered into the world sometimes reproduce. You are now a *grandparent*. Congratulations!

Where did *that* time go?

We really wear various names when you are in different fields of life. For instance, when travelling on a bus, train or any vehicle you are either the *crew* or a *passenger*. Whilst shopping you are a *customer*. Visiting the doctor or dentist you are called a *patient*. While having your hair cut, trimmed, dyed, or permed you will be a *client*.

On the weekend you may be a *punter* at the racetrack, a *spectator* at a football match or even a *player* in a game of tennis.

Dining out at your favourite restaurant makes you a *patron*.

On Sundays you could be one of the *congregation* in church.

If you're fortunate enough to find yourself on a cruise ship, you are called a *guest*.

Of course, at the Historical Society, we know who we are. We are called a *crew of volunteers*.

Bruce Moore

## SPECIAL INTEREST GROUPS

Our **Family History Group** meets on the first Wednesday each month, at 1pm. Convenor: Denise Mackey.

The Society's **DNA Interest Group** meets at the theatrette on the third Thursday each month at 1pm, **BUT please note will be at 2:00pm** on 16 April and 18 June. Convenor: Robyne McKinnon

## BERRIMA DISTRICT MUSEUM

1a Marketplace cnr Bryan St, Berrima

### OPEN: FRIDAY to SUNDAY

10.00am to 3.00pm

throughout the year including school and public holiday periods. Closed Christmas Eve, Christmas Day.

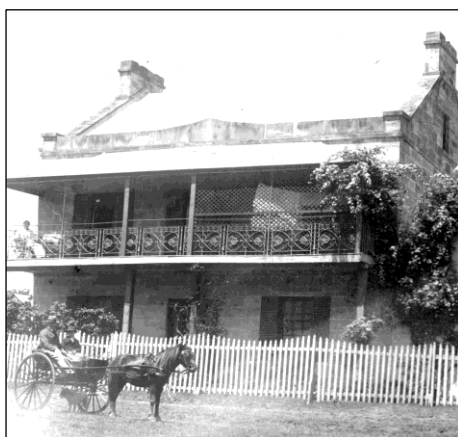
Groups welcome at other times by arrangement. Ph John 0434 623 402

Museum: Phone 4877 1130 or email [bdmuseum@bigpond.com](mailto:bdmuseum@bigpond.com)

## Our Contact Details

The Society's Research Centre is now at the Civic Centre, 68 Elizabeth St, Moss Vale. Please note that all membership enquiries and changes of address should be addressed to:

The Membership Secretary  
c/- [bdhsarchives@gmail.com](mailto:bdhsarchives@gmail.com)  
or c/- our postal address:  
PO Box 188 Moss Vale NSW 2577



## Berrima and Sutton Forest tour for members and friends

On Saturday 30 May we are planning a self-drive tour to three properties in Berrima and Sutton Forest.

**10:30am** – Morning tea followed by an inspection of the **White Horse Inn, Berrima**

Member Doug Graham has been engaged in restoring the property for the owners over the last five years.

Built in 1839 by Michael Doyle as the Royal Mail Coach Inn, the building is one of Berrima's most interesting.

**12 noon – Golden Vale, Golden Vale Road, Sutton Forest**

Built in 1870 by Edward Carter, Golden Vale is a National Trust property. Tour of the house and garden and then enjoy your own BYO picnic lunch in the grounds.

**2:00pm – Browley, Oldbury Road, Sutton Forest**

Inspection of the house and stone barn at the property established by John Waite in 1822. The earliest part of the house was built soon after and is the oldest surviving in the district. The large barn was built in the 1830s.

The cost including morning tea is **\$25** per person.

Please book/pay in person at our Moss Vale Research Centre/archives OR pay online into our account and send an email to advise us of your payment to [bdhsarchives@gmail.com](mailto:bdhsarchives@gmail.com)

Our bank account details are:  
**Name** Berrima District Historical  
**BSB** 633 000 **Acct No.** 200 107 100  
Bendigo Bank **Reference:** SF Tour plus your surname and initial.

Car-pooling is encouraged and we will help coordinate the arrangements.



Early view of the **White Horse Inn** c1916, and of **Golden Vale** homestead 1890s.

## Our April General Meeting at 2:00pm

**Speaker: Rosemary Rope**

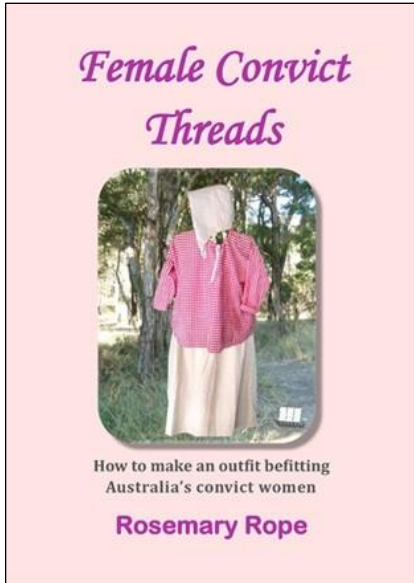
### **Topic: Clothing Australia's Transported Convicts**

The early years of the NSW convict colony were plagued by supply problems. Clothing was in short supply for decades. Rosemary gives an account of the supply issues and the basic outfits as worn by male and female convicts.

To find out what items were worn and what they looked like, many historical records have been searched.

Research included looking at common styles of clothes and fabrics available in the period, as well as drawings and museum pieces.

Reproductions of male and female clothes will be presented at the meeting and are available for close examination.



Her book "Female Convict Threads" (2025), explains how to make the female outfits.

### **Biography**

Rosemary Rope is a researcher and the author of historical works related to her family history. Her book "Bunster Hovendon" (2021) is about some of her Irish ancestral family.



She is also a descendant of two First Fleeters, Anthony Rope and Elizabeth Pulley. Rosemary is the Chairman of the Rope Pulley Family Heritage Association, and she has published many stories in the group's newsletter.

She has also researched the issues around the clothing of Australia's transported convicts. Come along to the meeting to learn about our shared past.

## A fun-filled Arts Day at Museum

On Wednesday, March 11, Berrima District Museum, in partnership with Southern Tableland Arts (STA), hosted a 'Sketch the Museum' workshop. With Rose Marin from STA, participants were guided through a fun and creative session using the museum displays for inspiration. All artistic levels were encouraged and materials were provided. The day was such a success that there are plans to offer another similar workshop for our Society members and friends as part of the Museum's 50<sup>th</sup> Anniversary celebration.

We thank Wingecarribee Shire Council for its support.



**Pictured immediately above are, from left, Tricia Aldridge and Andrew Goodchild, Annie & Stuart Handley, Rose Marin (STA), Linda Emery and seated Vanessa Dalgleish**

## BDH&FHS Constitution update 2026

Some necessary alterations to our Constitution, last revised in 2018, have been proposed and these were outlined to members at a Special General Meeting on 26 March. The proposed revisions have been made to a copy of our 2018 Constitution, and both versions are available on the website to peruse or download.

The revisions are itemised below. Members are asked to review these and provide us any feedback prior to the Special General Meeting at 10:30am on 28 May, at which members will vote to adopt the proposed revisions. The May General Meeting will then follow.

### PART 1 PRELIMINARY 1. Definitions

“**Director-General** etc” to be replaced with:

“**NSW Fair Trading** means the division included in the Customer Service cluster administered by the NSW Department of Customer Service.”

“**The Act** . . .” be altered to “*Associations Incorporation Act 2009* and *Australian Incorporation Act 2022*”

### PART 2 OBJECTS

**Para (c)** “to establish and maintain a museum”, **with words to be added** “as a branch of the Society acting under the Management Committee”.

**A note to be added after 2(j):** “The assets of the Society shall be applied solely in the furtherance of the above-mentioned objects and no portion shall be distributed directly or indirectly to members of the Society except as bona fide compensation for services rendered or expenses incurred on behalf of the Society.”

### PART 3 MEMBERSHIP

**4. Categories of Membership**, delete (b) student member and renumber (c), (d) and (e)

**12. (3) Resolution of Disputes**, *The Commercial Arbitration Act 1984* be altered to read *2020*

### PART 4 THE MANAGEMENT COMMITTEE

#### 17.(4) (2) The Treasurer shall

**Delete** “a) submit a written report on the financial position of the Society at each meeting of the Management Committee which is to be attached to the minutes;”

**Delete** “b) arrange for the books of account to be audited prior to the Annual General Meeting and a financial statement to be prepared for submission to the Annual General Meeting;”

**Retain existing e) as a)** “keep under his/her custody or under his/her control all records, books and other documents relating to the financial matters of the Society;”

**Insert new b)** “submit the financial statements to the Management Committee meeting and the Annual General Meeting;”

**Insert new c)** “Prior to the Annual General Meeting, arrange for the financial statements to be checked for ‘reasonableness’ by an accountant who is a member of a recognised Australian professional accounting body;”

**Insert new d)** “organise an independent review/audit of the annual financial statements if or when required by legislation or at the request of the Office-bearers of the Society (not including the Treasurer) or through member voting at the Annual General Meeting;”

**Retain existing (c) as (e)** “be an ex-officio member of all sub-committees . . .”

**18.(1) Office-bearers** add “and (f) Museum Manager”

### 21. Other Society Positions

**(1) remove** post of Museum Curator and **replace** with “Collections Manager”; also **remove** “Museum Manager” from line 3.

**(3) Museum Sub-committee – remove** “post of Museum Curator and not more than seven ordinary members” **and replace with** “Museum Manager, Museum Collections Manager and not more than six ordinary members”.

**The former clause 21 (4)** “auditor shall be appointed annually at the AGM” to be deleted and clause (5) about patrons **to be changed** to (4).

### 22. Public Officer: two clauses to be added –

“(2) The Public Officer serves as official contact for NSW Fair Trading regarding the incorporated association and is responsible for ensuring the Society complies with the *Associations Incorporation Act 2009* and any other applicable State and Commonwealth legislation.”

“(5) The Public Officer needs to be someone other than the Secretary, as the Public Officer is required to assume the duties of Secretary when that position is vacant.”

### PART 5 GENERAL, SPECIAL & ANNUAL GENERAL MEETINGS

**27. Annual General Meetings:** The Society must hold its Annual General Meetings:

“(b) within such later time as may be allowed by the Director-General . . .” **to be amended to** “(b) within such later time as prescribed by the Regulation”.

### 44. Change of Name, Objects and Constitution

“An application to the Director-General for . . . a change . . .” **to be amended to** “An application to NSW Fair Trading for registration of a change . . .”

**45. Custody of books etc** “The Public Officer etc . . .” **to be entirely deleted** and the following clauses 46 to 56 be renumbered as 45 to 55.

## Cosh & Roxburgh on Meryla's history

The locality of Meryla (*pronounced Mer-rye-la*) is situated southeast of Moss Vale in Wingecarribee Shire. It is now a rugged, mostly uninhabited area with Meryla State Forest covering much of it and is adjacent on its south side to Morton National Park. Meryla Road, built in 1896, extends for 15km from Nowra Road to locked gates where a walking trail begins, winding down Meryla Pass to Gales Flat and extending on to Lake Yarrunga in Kangaroo Valley.

The parish map of Camden County from the 1860s shows the parish of Meryla which encompassed the area that includes today's Manchester Square and Werai localities. It also extended south to Sandy Creek and down into Meryla Valley at the western end of Kangaroo Valley, reached by the steep Pass.

Following a request to the Society in early 2019 for information on the construction and use of Meryla Road and Meryla Pass and the origins of the name, a brief overview was provided in the May 2019 BDHS newsletter (#516). This was based on references found in newspapers on Trove, on a Kangaroo Valley tourism website and mentions in *A Place of Deep Gullies*, published by Bundanoon History Group.

Further research was undertaken and, unexpectedly, original research material on Meryla was found in the BDHS archives that had been compiled by Janet Cosh and Rachel Roxburgh. Their research was included in a more comprehensive Meryla history series that was supplied by the BDHS to the *Southern Highland News* and published as a 4-part series in 2022, generating some interest. An updated version follows here.

How fortuitous that the intrepid team of Cosh and Roxburgh had been on the case! As regular readers will know, both Janet and Rachel were early, active members of our Society and they made numerous contributions to local history, as described in recent issues of this newsletter (February #589 and March #590, to be soon uploaded onto our website).

In the 1960s, Janet was aged in her sixties and Rachel 15 years younger. Having acquired an avid interest in the history of Meryla, the intrepid pair explored the rugged locality, undertook research and interviewed several 'old-timers' over several decades.

Of prime interest to them was the part played by surgeon/explorer Dr Charles Throsby in the 12-man expedition of 1818 initiated by Governor Macquarie and led by Deputy Surveyor James Meehan to open up new farmland. From Sydney the party headed to the newly discovered south country in order to find

an inland route for wheeled vehicles between Sydney and Jervis Bay. Included were Dr Throsby, Hamilton Hume, Joseph Wild and two Aboriginal guides.

They crossed the Wingecarribee River and travelled to the area of present-day Tallong and Marulan, and then eastward to the locality of Bungonia, at the head of the Shoalhaven River gorge, from where they hoped to find a way to the coast. As it rained constantly, they had trouble crossing creeks and the horses became bogged. Meehan and Hume took their party southward from Marulan and discovered Lake Bathurst and then south-west to discover the Goulburn plains. This was after they split into two groups at the Shoalhaven Gorge, being unable to access the coast that way.

Dr Throsby and his team headed back north-east and, in March, his Aboriginal guides led the party down a pass which Throsby described, but did not name, in his journal and by which the party found a way down via Kangaroo Valley to Jervis Bay on the coast. Later historians disagreed about which route Throsby actually took to the coast.



*Sketch of Meryla Pass c1852*

Janet and Rachel 'got their boots on' and compared Meryla's terrain and landscapes to descriptions in Throsby's journal. Janet wrote that: "The first record of travelling down Meryla Pass is found in the notebooks of Dr Charles Throsby. In March 1818, guided by natives, he crossed the Bundanoon Creek south of Manchester Square and went along an easy line to Sandy Creek and then came upon the gorges of the Lower Yarrunga valley into which the party descended by way of the Pass. The horses had to be unloaded and the packs carried down. It took 4½ hours to reach Yarrunga Creek. The next day the party climbed over rough country but then dropped to meadow land on the banks of the Kangaroo River."

Roxburgh's description of Throsby's route, based on Janet's research, was published in the *Royal Australian Historical Society Journal* of March 1981, with a forward by A K Weatherburn who had, in

1978, written about the route of the 1818 expedition and in which he indicated the route taken by Throsby to the coast as not being down Meryla Pass. He now accepted that the route from Sutton Forest down the Pass proposed by Roxburgh was the most rational, he having examined the country in the company of Roxburgh and Cosh. He states that 'Meryla Pass appears to be the only practicable route through the escarpment, Throsby being accompanied by Aboriginal guides, Broughton and Timelong, who would undoubtedly have known where to make the descent.' Roxburgh began her account by stating that it was based entirely on research carried out by Miss Janet Cosh of Moss Vale.

From as early as the mid-1820s, some early settlers at Sutton Forest and Appin were moving cattle down Meryla Pass to graze on the fertile flats at the western end of Kangaroo Valley, including James Atkinson of *Oldbury*, and it remained in use as a bridle path until into the 20<sup>th</sup> century.

### Multiple uses of the name Meryla

In 1831 surveyor/explorer Robert Hoddle was instructed by Surveyor-General Mitchell to make an official survey of Kangaroo Valley and his resulting map shows the names of the valley's various mountain ranges, rivers and creeks, including Yarrunga Creek (with Fitzroy Falls at the head). Meryla is given as the name of a mountain and a creek through a valley, later known as Meryla Valley, at the western-most end of Kangaroo Valley. This is the first known use of the name *Meryla*.



**A view of Mount Meryla (centre) and the Meryla/Yarrunga Valley from a lookout at Fitzroy Falls, c1920**

By the 1860s local settlement had grown in the more accessible, upper parts of Meryla parish near to Moss Vale. As well as being adopted for the Pass, the name was given to a siding (later Werai) on the Great Southern Railway, and by the 1890s there were farms in Meryla Valley, accessed by Meryla Road and Pass.

Hoddle's map is the earliest known use of the name *Meryla*. As no other place in the world bore the name at the time and, as most of the other features in Kangaroo Valley are named from Aboriginal words, a

tradition encouraged by Mitchell, perhaps also is Meryla, but its actual derivation is unknown. The name or anything similar have not been found on any compilations of Aboriginal names. Although it is listed on the NSW Geographical Names Board's place-names index, no details about its origin are given.

Another puzzle arises from newspaper articles found on Trove mentioning 'Meryla Falls' that began appearing in the NSW press in the 1890s. One of these, illustrated with a photo showing a twin drop, describes the Falls as being "situated at the entrance to an immense ravine . . . where rises a large, table shaped mountain, called Mt Meryla, forming the southern extremity of a huge line of cliff, through which the water descends to join that of the Kangaroo River".

This mighty landmark does not appear on maps of today, so what happened to Meryla Falls? Research reveals that all mentions had ceased by 1910. It appears that Meryla Falls was an earlier name for Twin Falls, a still existing twin-drop waterfall near Fitzroy Falls, but which only flows after heavy rain, being fed by a branch of the same Yarrunga Creek that feeds Fitzroy Falls. A lookout on the eastern side of Twin Falls had previously been known as Meryla lookout. Why the Meryla name for the Falls was changed is not known.



While the various earlier uses of the Meryla name may be confusing today, its most consistent and long-lasting usages still apply to a pass, a road, a valley and a locality, all named Meryla, and all associated with a valley at the western end of Kangaroo Valley.

### Settlement at Meryla

It was in Meryla Valley that settlers established farming and grazing in the 1890s, accessed by Meryla Pass and Meryla Road. The road, opened in 1896, commenced at a turn-off from the main Yarrawa Road out of Moss Vale, proceeded to Gun Rock bridge, built across Bundanoon Creek in 1894, and continued southward to the Pass and down into Meryla Valley and eventually to the Kangaroo River. It provided a more direct vehicular route for valley dwellers than did an earlier track via Sutton Forest.

The valley is described in 'Down in Old Meryla' an article in the *Moss Vale Post* in 1947, contributed by Charles Wright of Moss Vale, formerly of Avoca:

"Those who stand on the top of Mount Meryla and look down upon the dense forest and undergrowth

with occasional sparse orchards gone to ruin, or an aging cherry tree, denoting the home of some of the first settlers in this district, find it difficult to realise that, in the memory of those still with us, the verdant valley was worked by upwards of 20 farmers, and where once there was a public school. The coming of the rabbit and the spread of the blackberry changed the outlook of the residents of Meryla.”

“When I was 12 years old my father bought 120 acres in the Meryla Valley and this was used as a dry stock run. At that time there was a population of about 70, including farmers, sleeper cutters, spoke and nave cutters (for the wheelwright business), and bee farmers came later. The farmers made butter and had pigs and made Moss Vale the market for most of their produce. There is rich soil throughout most of the valley. They were a wonderful class of people in those days, and most were self-supporting, growing most of their food on the farm. This included fruit and vegetables.”

“As for wildlife of the valley, wallabies were there in their thousands, lots of native dogs, tiger cats, fireflies, pigeons, diamond and carpet snakes up to 10 feet long, red-bellied black snakes and a few tiger snakes.”

“I myself ended up with 300 acres in the valley and ran up to 70 bullocks, but when the rabbits and blackberries made their appearance, and the pioneer families grew up and left, the place commenced to deteriorate and today is a back number from an agricultural point of view.”

More information about Meryla Valley is found in notes provided by Rachel Roxburgh to the BDHS archives. In 1982 she interviewed Herman Chapman, then in his 70s, who lived at Moss Vale, had run an automobile business, and had spent much time at Meryla. He recounted that Yates had a farm on Gale’s Flat, situated down the Pass; the Wells had a school near the Pass (on Garbutt family land), and that up to 1908 there were 30 farms, including both below the Pass and in the forest, but a fire went through that year, burning out most of the farmers who were already in debt, and the bank foreclosed. Several farms were burnt out by bushfires again in 1965.

Herman also noted that, by the early 1900s, the mails and through traffic were using Barrengarry Rd, a more direct way in and out of Kangaroo Valley, and when the settlers eventually left Meryla Valley, driven out by rabbits and blackberries, their local road up the Pass fell into disuse.

Another ‘old-timer’ was Stephen Garbutt. Janet Cosh interviewed him a few years prior to his death in

1970. The following anecdotes of his are from her notes: “Cedar trees growing below the cliffs brought in the cedar cutters. They hoisted the logs up the cliffs and then took them by bullock team to Sutton Forest by way of Werai. Convicts did the work of side-cutting and forming a track at the Pass in the 1820s. Meryla Valley farmers originally ascended this difficult and narrow bridle track to head across to Sutton Forest by way of Werai, until a vehicular road was built through the Pass in the 1890s, this perhaps being when the still existing solid rock retaining walls were positioned.”

Once the settlers had left valley by the 1920s, the track up Meryla Pass deteriorated but, after repairs were made, Meryla Road attracted adventurous motorists. The *Southern Mail* of 3 October 1930 described a journey by motor vehicle down the Pass in an article ‘Valley of a Myriad Scenic Marvels’.

It began: “The Southern Highlands are rich in scenic beauty. Some are widely known, including Fitzroy Falls, Belmore Falls, the Burragorang Lookout, the Gullies of Bundanoon. But off the main routes are even more magnificent views. Amongst these is the awe-inspiring vista of Meryla Valley, which lies on the old road to Kangaroo Valley.”

The article continued that, under the direction of the NRMA’s Guide Briggs, a party of members of the Association, which included some city visitors, visited this spot by undertaking a round trip from Bowral. In a procession of motor cars, they headed along Meryla Road to the Pass, down which they drove, and then easterly to Kangaroo Valley village, and from there to Bowral via the Nowra-Moss Vale Road.

It was also noted that some parts of the road had been cleared and numerous road signs erected so any motorist could follow the route. “The trip could be made in good weather with a minimum of discomfort, especially in the lighter cars, being more suitable for the several ‘V’ bends on the Pass where it is necessary to reverse. It is too much to expect in these times [of depression] that the whole road should be put into first-class order, but a few pounds might well be spent on the few really bad spots.”

Meryla Road extends from the Nowra Road turn-off to the head of the Pass, where today it terminates at gates locked to motorists. There are two walking tracks nearby: the Meryla Fire Trail that winds along ridge lines towards Fitzroy Falls, and the Griffins Fire Trail that descends Meryla Pass to Gales Flat in Kangaroo Valley and on to Lake Yarrunga.

The views are still magnificent.

*compiled by Philip Morton*

## Berrima District Historical & Family History Society Inc

PO Box 188 Moss Vale NSW 2577 ☎ Telephone (02) 4872 2169

email: bdhsarchives@gmail.com ☎ web: www.berrimadistricthistoricalsociety.org.au

<b>RESEARCH CENTRE and ARCHIVES</b>	Wingecarribee Shire Council, Civic Centre 68 Elizabeth Street Moss Vale OPEN: Mondays, Tuesdays 10am-4pm and Saturdays 10am-1pm. Closed Public Holidays. Library collection contains reference books, journals and a general collection.
<b>MUSEUM</b>	Market Place, Berrima. Tel: 02 4877 1130. Email: bdmuseum@bigpond.com OPEN: 10.00am to 3.00pm, Fridays to Sundays. This includes during school and public holiday periods.
<b>MEMBERSHIP</b>	Any person wanting to join the Society may do so at any stage during the year by completing a form and paying the appropriate fee: Single \$25.00; Family \$35.00 (plus a Joining Fee of \$10.00)
<b>AFFILIATIONS</b>	Royal Australian Historical Society, Museums Australia Inc and NSW Association of Family History Societies.

If undelivered return to:  
Berrima District Historical & Family History Society Inc  
PO Box 188  
MOSS VALE NSW 2577  
Berrima District Historical & Family History Society Inc  
Newsletter  
Print Post Approved  
PP100001055

PRINT POST  
100001055

POSTAGE  
PAID  
AUSTRALIA

### BERRIMA DISTRICT HISTORICAL & FAMILY HISTORY SOCIETY Inc.

**PATRON:** Councillor Jesse Fitzpatrick, Mayor of Wingecarribee Shire

<b>President</b>	Stuart HANDLEY	<b>Archivist</b>	Linda EMERY
<b>Snr Vice President</b>	Linda EMERY	<b>Museum Manager</b>	John SCHWEERS
<b>Jnr Vice President</b>	Ian MACKEY	<b>Membership Secretary</b>	Janet BLACK
<b>Hon Treasurer</b>	Rhonda BROWN	<b>Newsletter Editor</b>	Philip MORTON
<b>Acting Secretary</b>	Philip MORTON	<b>Conservation Officer</b>	Denise MACKEY
<b>Research Team</b>	Frank MITCHELL, Carolyn DOUGHERTY and Janet BLACK		

**Management Committee:** President, Vice Presidents, Acting Secretary, Treasurer and members Denyse Barker, Ros Dale, John Schweers, Melissa Coorie and Lyndal Breen

**Museum Sub-Committee:** John Schweers, Dr Conni Lord, Vanessa Dalglish, Lyn Hall, Sylvia Carless and Michele Woods