



Bowral



Mittagong



Berrima



Moss Vale

BERRIMA DISTRICT HISTORICAL & FAMILY HISTORY SOCIETY Inc.

Founded 1960

Located in the Wingecarribee Shire,
Southern Highlands of NSW

NEWSLETTER

No 501 December 2017



From the President's Desk

As we embark on a new year at the Society you will notice many changes to Office Bearers, Management committee members and Appointed Positions. At our recent AGM, which was efficiently conducted by our

returning officer, Gloria Williams, all nominated and appointed positions were declared elected.

All office bearers and committee members for next year are listed on the back page of the newsletter.

Mention should be made of the Society office bearers who have given outstanding service over the past years and are no longer continuing in their positions.

They are Lavinia Ford as Newsletter Editor, Carolyn Hutton as Publications Officer, Leonie Knapman as Junior Vice President, Bruce Moore as President and Philip Morton as Secretary. They have all given great service to the Society and we appreciate their contributions.

As we are aware, early this year, our dedicated Research Officer, Max Rogers, sadly passed away.

Max was the ballast that kept the ship on a stable course. To continue Max's great work a team of researchers has now been established.

Our Society could not function without our loyal band of dedicated volunteers. It is amazing what talent and expertise we can call upon. Thanks to everyone.

Next year is shaping up as an exciting year, with some projects under way and others on the drawing board. I will bring you more information through this column during the year.

Our annual Christmas luncheon will be held at the Highlands Golf Club, Mittagong on 15 December. It is a fitting event to end a dynamic and productive year.

I would like to wish all members of the Society a Merry Christmas and a Happy and Healthy 2018. The Archives will reopen on the 8 January 2018.

Ian Mackey

GENERAL MONTHLY MEETINGS

DECEMBER 2017 No meeting

JANUARY 2018: No meeting

FEBRUARY 2018: Thursday 22 February at 2:00pm

SPEAKER: To be announced

AFTERNOON TEA: To be served following the speaker. Members please bring a plate or a donation

THE
Story
Centre

BERRIMA
DISTRICT
MUSEUM

STORIES OF PEOPLE, PLACES
AND OBJECTS FROM
THE SOUTHERN HIGHLANDS

Senior Vice-President's Column



Bruce Moore

Annual General Meeting of 2017

Because we're an historical society, I thought reporting the occasion of our AGM in a 100-year-old historic journalistic style would be appropriate.

What a colossal event in which the Society partook at the AGM last Thursday. Speeches were made, votes were taken and appropriate persons were elected.

In all, a good time was had by all.

Mr. Ian Mackey was duly elected President and was accompanied by his goodly and loyal wife, Mrs. Mackey wearing a lovely pink floral frock.

Our highly esteemed and former Treasurer, Mrs. Peter Doris was fittingly reinstated in her former position. She wore a pretty pin tucked blouse and tailored slacks.

After a secret ballot was conducted, Mrs. Colin Harvey was elected as the incoming Secretary to the Society. Mrs. Harvey is a stalwart member possessing unshakable principles and will be a blessing for this position.

It was the cat's whiskers to see such eagerness pervading the meeting and although there would have been the ubiquitous disappointment among some of the gathering, the general tenor was that of delight.

The willing and able members provided a terrific supper, putting paid to any doubts that meetings can be seen as a wet blanket.

As far as food was concerned, there was none better than that partaken on the day.

The weather was inclement and a tremendous thunderstorm ensued, but by then the patrons had dispersed and taken to the safety of their motorcars.

Berrima District Museum

THE STORY CENTRE

Please note that the museum is now open at least 5 days a week

MUSEUM OPEN: 10am to 4pm

WEDNESDAY TO SUNDAY

and every day during NSW school holidays and on public holidays.

Groups welcome at other times by arrangement. Ph John 4872 1660.

The travelling exhibition loaned from State Archives and Records NSW

Windows into Wartime

is on display at the museum until the end of January. Through the lens of NSW Government photographers, it provides glimpses into the home front during and immediately after World War I. It's worth a special visit.

Archives opening hours

Monday 10:00 am – 4:00 pm

Tuesday 10:00 am – 4:00 pm

Saturday 10:00 am – 1:00 pm

Research Fees

Research fees for non-members:

\$25.00 per hour or part thereof for telephone and postal enquiries.

\$5.00 per hour or part thereof for enquirers who attend the archives and carry out their own research.

Would you consider . . .

As we all know, Australia Post has significantly increased their postal charges and, as we have a sizable membership, the cost for postage each month is quite substantial.

It would help us immensely if you agreed to receive the newsletter by email. For those of you who prefer receiving the newsletter by post, we assure you the printed version will continue to be issued.

Membership Details

Please note that all membership enquiries and changes of address details should be addressed to:

The Membership Secretary
c/- the Society's postal address
or email: bdhsarchives@gmail.com

From Wingecarribee Council

On 9 November we received an email from Sarah Farnese, WSC Strategic Planner – Heritage (casual), advising us of proposed town clock upgrades and seeking our input and comments:

Council officers are in early stages of developing options to upgrade the inner workings of the town clocks at Mittagong and Moss Vale.

These upgrades would see the retirement of part of the original clock workings and replacement with a master clock system which will minimise ongoing maintenance and ensure that the clocks always display accurate time. At this early stage, we are exploring ways in which the new modernised clock mechanism can be integrated into the existing clock towers, leaving as much of the original infrastructure as possible, either in situ or on another site.

In relation to the Mittagong War Memorial Clock, the inner clock mechanism which drives the clock hands is apparently quite rare, historically significant and visually interesting and Council is considering an option where it is removed from the clock tower, fitted with a new clock face and displayed somewhere where it can be seen in operation.

I have suggested that the most appropriate location is within the former Mittagong Council Chambers building and, as a concept, this has been supported by Council's Assets staff. The purpose of this email is to let you know that Council is looking to upgrade the clock and if the Mittagong clock mechanism is appropriately relocated and displayed then your assistance in providing some appropriate wording for an interpretation plaque would be greatly appreciated.

I am also interested in any other comments or feedback you might have on this proposal.

Please note that in both the case of Moss Vale and Mittagong there will be no visible change to the exterior of the clocks. Although the existing clock faces have apparently been upgraded/maintained over time, they appear to be the same as the original clock faces and they will be retained as is.

Celebrate the Season of Goodwill



Our Society's Christmas Lunch

will be at Highlands Golf Club, Mittagong
on Friday, 15 December at 12:00 for 12:30

A two-course Christmas lunch with all the trimmings
will be served as an alternate drop.

The cost is a very reasonable \$28 per person.
Members, partners and friends are most welcome.
There will be the usual lucky door prize and raffle.

This notice is just a reminder, as bookings and
payment should already have been made.

2018 Australia Day Parade

As mentioned in last month's newsletter, over the
past few years some members of our Society have
donned themselves in vintage outfits and creatively
joined the Australia Day Parade at Berrima.

Following the parade we indulge in a traditional
Aussie lunch of pies, lamingtons and a cuppa on the
verandah at the museum.

We would like more members to join us! Why not
come along all dressed up and share in the fun. Our
more experienced participants are most willing to
provide advice on how to create an historic outfit
without incurring too much expense.



Being seen to promote an interest in local history
helps keep the Society's name and activities before
the public is a rewarding experience in itself, as the
crowd's appreciation lifts your spirits.

For more details contact the archives or museum.

February tour to local historic houses

MITTAGONG AND BOWRAL

On Sunday 11 February 2018 we will be doing a 'Tag
along Tour' of two private homes, one in Mittagong
and one in Bowral.

Our first stop will
be at Wandevan in
Southey Street,
Mittagong.

Completed in 1886,
the house was built
as a residence by
Henry Southey who
ran his Oakland
Boarding School
further down the



hill (now the Fitzroy Inn). Australia's first prime
minister, Edmund Barton lived in the house in the
late 1880s. Owners Peter and Trish Law have kindly
invited us to view the house which they have
restored and cared for over many years.

We will have morning tea at Wandevan before
driving to Bowral for another house visit. We are just
finalising the Bowral part of the tour, which may
include something rather special as an extra
attraction. Details will be confirmed in the February
newsletter.

The tour will start from the archives car park at 10am
and return around 2.30 to 3.00pm. We will be
travelling by car, so where possible we will car-pool
to minimise the number of vehicles at the venues.

Bookings are essential and numbers are limited, so
book early to avoid disappointment! Payment to be
made at the archives by Saturday 3 February 2018.

**COST: \$10 per person (includes a delicious morning
tea) BRING YOUR OWN LUNCH**

RAHS Conference 2017 - Cowra

Linda Emery

The Annual Conference of the Royal Australian
Historical Society was held on 27/29 October 2017 in
Cowra. Leonie and Greg Knapman and I attended as
delegates from our Society. Over three days we
enjoyed the wonderful hospitality of the members of
the Cowra and District Historical Society and Cowra
Family History Group, supported enthusiastically by
the Cowra Shire Council. *(continued next page)*

The pre-conference event at the Japanese Garden and Cultural Centre set the tone for the weekend. On a beautiful balmy evening we were entertained by a local group of Aboriginal dancers, with the backdrop of the gardens.

The theme of the conference was Finding Lost Places, Lost People and the papers presented certainly addressed that. Those given by Cowra people relating to the prisoner of war camp in Cowra, and later the migrant camp gave a very good overview of this period from the 1940s to the 1950s as a prelude to the afternoon tour.

Of great interest was a paper given by Margaret Stent on the Pardey Collection of photographs which consists of some 27,000 images held by the Cowra Family History Group. The Pardey Photographic Studio operated in Cowra from the 1880s to the 1970s photographing people and events throughout that time. They include some 4000 photos of soldiers who trained at the Cowra Military Camp during World War 2. It is an amazing collection, now indexed by the volunteers from the family history group.

One of the most pleasing presentations was a Certificate of Appreciation awarded to Leonie Knapman for her many years of service as a member of the RAHS Affiliated Societies Committee. Leonie has travelled to Sydney to attend their meetings and assist with the organisation of the Conference for more than 15 years and it was wonderful to see her recognised in this way (here receiving her award from Carol Liston).



Our newsletter editor for 17 years, Lavinia Ford, was awarded an RAHS Certificate of Achievement for her contribution to the Society both for her role with the newsletter and work on the cemetery transcription database, a well-deserved recognition of her dedication and talents.

The RAHS conference is a great way to keep up with what is happening in the history world, to discuss the shared joys – along with the problems – of our societies and museums and to learn from experts in their various fields. The 2018 conference will be held in Port Macquarie from the 19-21 October and looks like being another outstanding event. Details will be on the RAHS website and in our newsletter. Why not squeeze it into a north coast holiday next year?

New travelling exhibition at Museum

At the Society's Berrima District Museum, the official opening took place on Wednesday 6 December 2017 of Windows into Wartime, a travelling exhibition on loan from State Archives and Records NSW.

The exhibition is a collection of historic photographs produced by the NSW Government Printing Office, taken by camera operators (as photographers were then called) during the time of Australia's involvement in the First World War and its transition into post-war society.

Ian Mackey, our new President, welcomed attendees to the event and then Linda Emery spoke briefly. She recalled the time when State Archives first put their paper records onto microfilm, which was a great advance, but now of course it has gone digital!



Geoff Hinchcliffe

Linda introduced Geoff Hinchcliffe, who spoke from the heart about aspects of life and death reflected in the historic images. He explained that the collection is a legacy in the form of fragile glass plate negatives. Under the custodianship and care of State Archives and Records NSW, they are being uncovered and brought to light. There are many more images, not all to do with war, and further themed exhibitions are being considered, including The Builders of Australia and Love, Marriage and the Law.

Geoff said how pleased he was that the exhibition had come to the Southern Highlands and officially declared it open.

Museum Manager John Schweers thanked Geoff and made special mention of volunteer Lyn Hall who was instrumental in securing and curating the exhibition.

Among those attending were members of our Society including the BDHS Committee, museum committee members and volunteers, as well as interested local people. Light refreshments were provided, making the afternoon event a most enjoyable occasion.



At the Windows into Wartime exhibition opening are, from left, Ian Mackey, Lyn Hall, Linda Emery, Geoff Hinchcliffe and John Schweers. Photo: Bud Townsing.

The Society's Management Committee extends its thanks to the Museum Committee for organising and staging the event and to the museum volunteers for their warm welcome and delicious refreshments.

During his speech, Geoff Hinchcliffe had explained how the Windows into Wartime exhibition reflected at least six different aspects of the period, directly or indirectly connected to the First World War.

Themes depicted include: advancements in public health, the rise of volunteer movements, organising of recruitment campaigns and patriotic fundraising events, the formation of the Red Cross in Australia and the establishment of soldier support schemes. The photographers were on the ground 'shooting the image'.

One hundred years later, this unique historical record enables us to reflect upon the upheaval that the War had upon Australian society.

Geoff pointed out how, in addition to revealing the main themes, the photos were rich in details showing glimpses of Sydney landmarks, buildings and people of the time, and he recommended a close inspection.

He also provided some details about several of the main themes depicted in the historic images.

One being 'Bouncing babies – A strong Australia'.

He read an extract titled 'Infantile Mortality' from the Medical Journal of Australia, June 1917:

"The waste of healthy young lives in the Great War is a colossal calamity which the Empire must face and attempt to remedy with all available means. Added to this waste of adult lives there is the fact that vast areas of the Commonwealth need a far larger population of workers . . . The problem of the next generation rests primarily on a reduction of infantile death and infantile disease, and the rearing of strong Australian children".

To provide new mothers with education on the health and care of their babies, by 1919 there were thirty baby clinics throughout NSW, with fourteen in the Sydney metropolitan area.

Geoff also made mention of the poignant images related to the purple pandemic. In February 1919 NSW Premier Holman declared that "a danger greater than war faces NSW and threatens the lives of all". An influenza pandemic had taken hold in Europe and spread rapidly across the globe, killing between 50 and 100 million people. The NSW Government quickly introduced measures to contain the spread of disease.

Schools, theatres, dance halls, churches, pubs and other public gathering places were closed. Even though an inoculation vaccine had been developed, the health system was pushed to breaking point. There were reports of people waking up well in the morning but dead by night fall. A purple cyanotic skin colour was a distinctive tell-tale sign.

In NSW more than half the deaths occurred in people aged between 20 and 39 years. There were reports of people waking up well in the morning but dead by night fall. A purple cyanotic skin colour was a distinctive, tell-tale sign that death was near. In less than a year, more than 12,000 Australians lost their lives to pneumonic influenza.

All preventative measures were retracted in NSW after the influenza's last notification in August 1919.

For those wishing to reflect upon these and other aspects of our shared past, the museum at Berrima is open every day during the school holidays.

The Windows into Wartime photographic exhibition will be open until the end of January 2018.



Image: Opening ceremony, Mosman Cottage, Frenchs Forest Soldier Settlement, 1916. NRS 4481 MS 4860

Compiled by Philip Morton including text by Penny Stannard, Exhibitions Curator, State Records and Archives NSW.

Our new President: Ian Mackey

Ian has a hard-to-beat local pedigree and a wealth of relevant experience, as the following outline reveals.

He is a fourth generation Southern Highlander. His great grandfather, John Mackey, arrived at Melbourne from Ireland in January 1860. He travelled on to Tasmania where he met and married Mary Ann Delanty. They had four children in Tasmania. The family moved to NSW circa 1868 and settled in the newly established village of Wildes Meadow. They had four more children. John Mackey was a farmer, he died in 1889 and is buried in Burrawang.

Ian was born in Moss Vale and lived the first 26 years of his life in Wildes Meadow and Burrawang. He moved to Bowral in 1976 and still resides there.

His working life consisted of two major phases. Firstly, he worked in engineering as a draftsman and mechanical engineer for 21 years. The next 22 years he was involved in establishing and managing several businesses in the district.

Personal interests include: philately, family history research, classic and vintage cars, sport (cricket, tennis, squash and golf) and personal fitness.

Community involvement: Philatelic Society; Squash Club; Berrima District Credit Union foundation member and director for 9 years; Bowral Chamber of Commerce committee member for 10 years; St Vincent de Paul volunteer for over 12 years; and a volunteer with our Society for 8 years including in 2017 as Treasurer. Ian is keen to dedicate himself to make the Society an organisation we can all continue to be proud of.

New Research Team at Archives

An archive's research team has been formed. Its role is to coordinate the research required to respond to the many inquiries that our Society receives by email, post, phone and from personal visits to the archives at Mittagong or to our museum at Berrima.

The new coordinating team consists of Carolyn Dougherty, Janet Black and Frank Mitchell, under the guidance of archivist Linda Emery. When inquiries require Linda's specialist knowledge, she will either respond to them directly or provide direction to the research team. The team will ensure that research requests are dealt with efficiently and that there's always at least one member on duty at the archives on the days when it's open to the public.

Carolyn Dougherty

Carolyn is a librarian and author/researcher who worked at University libraries for many years in Sydney. After she moved to the Southern Highlands in 1998, she worked in various positions and became a member of our Society.

During the early 2000s, Carolyn helped Carol Nolan with the compiling and typing of 'Digging up the Past' one of our most popular publications. She researched and wrote 'Changing Fortunes: A History of Willow Vale, Southern Highlands, NSW' which was published by the Society in 2015.

Following the death of Carol Nolan in 2016, Carolyn completed Carol's research into the history of Rowe's Hill school and cemetery at Lower Mittagong. Details were provided to Wingecarribee Shire Council for signage at the historic cemetery where also a public bench was dedicated to Carol Nolan.

Carolyn also serves as our Librarian, looking after what is now the Max Rogers Research Library.

Janet Black

Janet is also a trained librarian who moved full-time to Tallong on her husband's retirement in 2009. She was the chief project researcher for 'Tallong a Heritage' published in late 2009 and was responsible for an updated and expanded version of 'Forgotten Soldiers: Men and Women from the Southern Highlands who served in the Boer War' published by our Society in May 2014. She also collated a book on the 100th Anniversary of Tallong Public School and over the past year has been helping with research for our Society's upcoming book on the history of the Mittagong RSL.



Frank Mitchell

Frank is an expert at using the National Library's Trove website for historical research. Earlier this year he formed a 'Trove Users Group' to help our members become more proficient at research. Frank's past employment includes as an engineer on the Snowy Mountains Hydro and Shoalhaven schemes. He has a keen historical interest in large engineering projects, including both railways and shipbuilding.

The team's combination of skills will provide our Society with enviable research capabilities.

Celebrating 150 years of rail services

Railway services between Sydney and the Southern Highlands commenced in 1867. This year 2017 marks the 150th anniversary of the railway, and the opening of Mittagong, Bowral and Moss Vale stations.

Mittagong Station opened in February 1867 and its 150th was celebrated earlier this year. The stations at Bowral and Moss Vale opened on 2 December 1867. Events to celebrate this were held simultaneously at the two stations on Saturday 9 December.

At Bowral, a display of historic photos and stories about the station was mounted in the waiting rooms and staff explained details of the station to visitors.

A day of events was held at Moss Vale, organised by a Committee formed by Dymphna Irwin, one of our members. Dignitaries in attendance included the Hon Justice Margaret Beazley AO, NSW Supreme Court, who filled in for the NSW Governor, Pru Goward, the Member for Goulburn, and Howard Collins, NSW TrainLink Acting CEO. A plaque was unveiled to mark the anniversary, as was a memorial to honour the railwaymen who served in the various wars.

Musical entertainment, refreshments and historical displays were provided. Our Society conducted an information and book stall, arranged by member Carolyn Hutton with assistance from several of our members. We thank them for their time and efforts.

Next year there will be 150th anniversary celebrations at Bundanoon, and at stations further down the line.

An overview of the Great Southern Railway

The first railway in NSW was built from Sydney to Parramatta Junction in 1855, and railways to the rest of NSW were proposed, largely driven by pastoral communities seeking improved transport.

When John Whitton arrived in Sydney in 1856 to take up as Engineer-in-Chief of the NSW Railways, his job was to plan and build these railways. For the first stage of a railway to Goulburn, he built a line from Liverpool to Campbelltown which opened in 1862, and extended to Picton in 1863. From there the Great Southern Railway was built in sections by contractors, the first stage being through the rugged terrain of the Bargo ridge, which was opened to Nattai (now Mittagong) in February 1867.

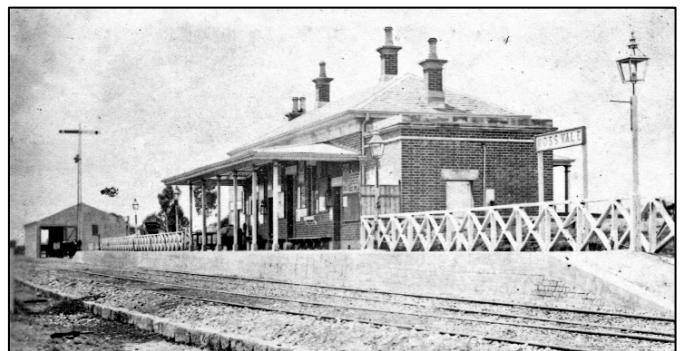
South of Nattai a tunnel for the rail line was built under Mt Gibraltar by men who lived nearby in tents. From the tunnel's exit the next section was built over the Wingecarribee Flats to the river near Bong Bong.

It passed through land granted to the Oxley family (now Bowral and Burradoo). Initially there was no plan for a station where Bowral now is. The nucleus of a village, however, had arisen from the railway workers' camp at the tunnel. The Oxleys set about surveying a township and sub-divided the country surrounding the rail line.



After requests from landowners including from more than 300 at Kangaloon and Yarrowa, a platform and small station were built at Bowral ready for the opening of services on 2 December 1867.

Construction of the line had continued southward, the next section of eight miles commencing from and including the Wingecarribee Viaduct at Bong Bong, and proceeding onward to Exeter. A station, built about four miles south of the Viaduct, was called Sutton Forest. This name had been given to the locality by Governor Macquarie in 1820 where a village developed. By the 1860s three large rural estates, owned by the Throsby, Hutchinson and Browley families, spread across the area. In anticipation of the railway, subdivisions for a township at the station were put up for sale in 1863.



Sutton Forest Station opened on 2 December 1867. The township surrounding it soon began to flourish, adopting the name Moss Vale. This became the station's name in 1877. The southern railway opened to Goulburn in May 1869 and to Albury in 1883.

Hearty congratulations to Bowral and Moss Vale stations for their 150 years of service.

Compiled by Philip Morton

Berrima District Historical & Family History Society Inc

PO Box 131 Mittagong NSW 2575 ☎ Telephone / Fax (02) 4872 2169

email: bdhsarchives@gmail.com ☎ web: www.berrimadistricthistoricalsociety.org.au

- ARCHIVES:** Cnr Old Hume Highway and Bowral Road, MITTAGONG.
OPEN: Mondays, Tuesdays 10am-4pm and Saturdays 10am-1pm. Closed Public Holidays.
Library collection contains reference books, journals and newsletters of other societies.
- MUSEUM:** Market Place, Berrima. Tel: 02 4877 1130. Email: bdmuseum@bigpond.com
OPEN: 10.00am to 4.00pm, Wednesdays to Sundays, and during school and public holidays.
Museum Committee: John Schweers (Manager), Harlan Hall (Project Manager), Lyn Hall (Graphics, Exhibitions), Sylvia Carless (Roster), Alan Hornsby, Harold Wall (Human Resources).
- MEMBERSHIP:** Any person wanting to join the Society may do so at any stage during the year by completing a form and paying the appropriate fee. Joining Fee \$10.00 – Single \$25.00 – Family \$35.00.
- AFFILIATIONS:** Royal Australian Historical Society, NSW Association of Family History Societies, Museums Australia Inc & Regional Chapter.

If undelivered return to:
Berrima District Historical & Family History Society Inc
PO Box 131
MITTAGONG NSW 2575
Berrima District Historical & Family History Society Inc
Newsletter
Print Post Approved
PP100001055

PRINT POST
100001055

POSTAGE
PAID
AUSTRALIA

PATRON: Mayor of Wingecarribee Shire: Councillor Ken Halstead

President	Ian MACKAY
Snr Vice President	Bruce MOORE
Jnr Vice President	Linda EMERY
Hon Treasurer	Patricia Doris
Hon Secretary	Peg HARVEY
Archivist	Linda EMERY
Museum Manager	John SCHWEERS
Membership	Peg HARVEY
Newsletter Co-ordinator	Philip MORTON
Research Team	Carolyn DOUGHERTY, Janet BLACK and Frank MITCHELL
Conservation Team	Denise MACKAY, Roberta STOVE

Management Committee: President, Vice Presidents, Secretary, Treasurer and members Leonie Knapman, Denyse Barker, Philip Morton, Carolyn Dougherty, Denise Mackey, Jenny Frost, Ros Dale.