

Founded 1960

BERRIMA DISTRICT HISTORICAL & FAMILY HISTORY SOCIETY INC

NEWSLETTER

No 479 December 2015

Located in the Wingecarribee Shire,
Southern Highlands of NSW

ABN 29 362 616 937

From the President's Desk

Just a brief note to say a large 'thank you' for your support again this year and of course humbled in your belief in re-electing me once more as President of your Society. I hope I can live up to expectations.

Congratulations to our ever reliable crew members of the Management Committee and no less important, the Museum Committee.

Elections and appointments were made at our AGM held on Thursday 26th November.

Our patron, Wingecarribee Mayor, Larry Whipper was invited to the meeting. He stated that he was honoured with his appointment as the Society's patron and recognised that we were a significant strength in our community. The work we volunteers were doing was invaluable and ended with a gentle cautionary note, reminding us of the risks involved in re-writing history. Thanks, Larry.

In November, the Museum won 2 awards and Lyn Hall received a Highly Commended. I think out of a possible 500 Museums in the State, this has to be the peak of achievements. We are very proud of our Museum and its energetic workers.



**Bruce Moore,
President**

Continued on page 2

GENERAL MONTHLY MEETING

DECEMBER MEETING: NO December Monthly General Meeting

JANUARY MEETING: NO January Monthly General Meeting

FEBRUARY MEETING: Thursday 25 February 2016 at 2:00pm

VENUE: Society Research Centre, Old Council Chambers Building,
Bowral Road, Mittagong

THE
Story
Centre

BERRIMA
DISTRICT
MUSEUM

STORIES OF PEOPLE, PLACES
AND OBJECTS FROM
THE SOUTHERN HIGHLANDS

Museum news on page 3



Merry Christmas and Happy New Year



From the President

Continued from front page 1

(Viz. article.)

We now look forward to our Christmas Luncheon at Dormie House on the 10th, and we 'break up' the following week until 11th Jan. (Viz. notices.)

On that note, have a well-deserved break over the silly season. If you are travelling, stay safe, drive carefully; Happy Christmas and we look forward to seeing you in the New Year.

Overheard at a volunteer conference:

In response to the observation that volunteers are too often seen as amateurs: "Just remember: Noah's Ark was built by amateurs. The Titanic was built by professionals."

Archives report

Although we are winding down for the year, there is still a lot of activity at the archives, with volunteers working on a number of projects. Sandy McKenzie has almost completed her research on the street names of Mittagong and is putting photographs together for what will be the first publication in our proposed series on the origin of street names for all the towns and villages in the Southern Highlands.

We are very pleased that the Southern Highland News has offered us bound copies of the newspaper from the early 1970s to current editions which we have accepted. We will be able to replace the loose copies we have with these beautifully bound newspapers which will ensure a longer life for them. Thanks to Philip Morton for organising this with the SHN and to the editor, Jackie Meyers for her support of the Society.

The Wombeyan Caves photos from 1899 that were recently donated to the archives have now been professionally scanned and look very good. They will soon be up on our website and on Trove, so keep an eye out for them in the next couple of weeks.

Sadly, we said goodbye last week to Monday Caroline Stanley who has been with us since September last year. As our youngest volunteer, she was a delight to have in the archives and did some great work with Carol Nolan and Carolyn Dougherty for which we thank her. We are so pleased that she has gained a full time job, and we wish her well for the future.

The archives will be closed for our usual Christmas / New Year break from Tuesday 15th December until Monday 11th January. To all the volunteers, I say thank you for everything you have done throughout the year and wish everyone a very happy Christmas season.

Linda Emery

Archives closing dates

Closed **Dec 15, 2015**
Open **Jan 11, 2016**

Berrima District Museum

THE STORY CENTRE

Please note that the museum is now open at least 5 days a week

MUSEUM OPEN: 10am to 4pm

WEDNESDAY TO SUNDAY

and every day during NSW school holidays and on public holidays.

Groups welcome at other times by arrangement. Please phone John on 4872 1660.

Membership details

Please note that all membership enquiries and changes of address details should be addressed to:

The Membership Secretary
c/- the Society's postal address
or email to:
bdhsarchives@gmail.com

Newsletter

Newsletrr Deadline is **25th** of every month. It may be necessary to hold submissions after this date till the following month.

Research fees

Research fees for non-members:
\$20.00 per hour or part thereof for telephone and postal enquiries.

\$5.00 per hour or part thereof for enquirers who attend the archives and carry out their own research.

Archives opening hours

Opening hours are as follows:

Monday
10 am - 4 pm

Tuesday
10 am - 4 pm

Saturday
10 am - 1 pm



Several IMAGinE awards 2015 received by museum

Museums & Galleries NSW recently announced the winners of their prestigious Inspiring Museums and Galleries in Excellence (IMAGinE) Awards. Across NSW there are five hundred museums, galleries and Aboriginal cultural centres that qualify for the awards. Of the 74 centres and individuals nominated in various categories, our Museum won two awards and a high commendation.

M&G NSW is located at the Arts Exchange in The Rocks, Sydney. It is a not-for-profit organisation that receives core funding from Arts NSW, and additional funding from project grants. It is also assisted by the Commonwealth Government through the Australia Council for the Arts.

The [IMAGinE Awards](#) were first envisioned in 2008 to bring the industry together and have been running ever since. They are assessed independently by a panel of industry specialists. These adjudicators look for exceptional projects and programs, innovative approaches to attract audiences and solid processes in presenting material. They commend new ways, economical ways, fun ways of curating stories, and they look for the careful preservation of the state's resources including collections, monies that fund activities, and of the physical environments they exist in. The awards recognise the best metropolitan and regional visual arts and cultural heritage experiences and the individuals who make these experiences possible.

The awards received by our Museum in the Volunteer Category this year are:

WINNER: Category SUSTAINABILITY PROGRAMS New Museum Gallery Extension



The new extension was named the Williams Gallery in recognition of Bob and Gloria Williams' many years of service. The vision was twofold: to design, build and fit out a multi-purpose gallery to environmental standards of best museum practice and to provide the Museum with a space for temporary exhibitions.

The facility is the first exhibition space in the district capable of accommodating touring exhibitions from state, national and international cultural institutions.

A community fundraising program generated \$35,000 in cash donations, massive in-kind donations from local builders, tradesmen and building suppliers

valued at \$300,000 and ten significant grants from local, state and federal governments and private trusts amounting to \$186,000, for a total of \$521,000. The new gallery is a generous gift to the community from these individuals, companies and funding institutions. This award recognises these efforts.

WINNER: Category ENGAGEMENT PROGRAMS

Cloud Stories Digital Exhibition

- www.thestorycentre.com.au

A 'cloud story' is a stand-alone digital exhibition or one to complement an existing exhibition by integrating the stories of people, places and objects. The Museum originally developed the concept to enhance and expand its Anzac Centenary exhibition, but with limited physical space *Cloud Stories* offers flexibility to expand and complement existing exhibitions inexpensively. The cloud story technology encourages re-visitation as content can be continually updated. Visitors can continue their exhibition experience anywhere, anytime on their own digital devices, sharing it with friends and family and developing new audiences.



The concept allows small regional museums to keep pace with the way major institutions are using digital technology and meet visitors' changing expectations.

Our museum has now been recognised for bringing the museum into the digital age.

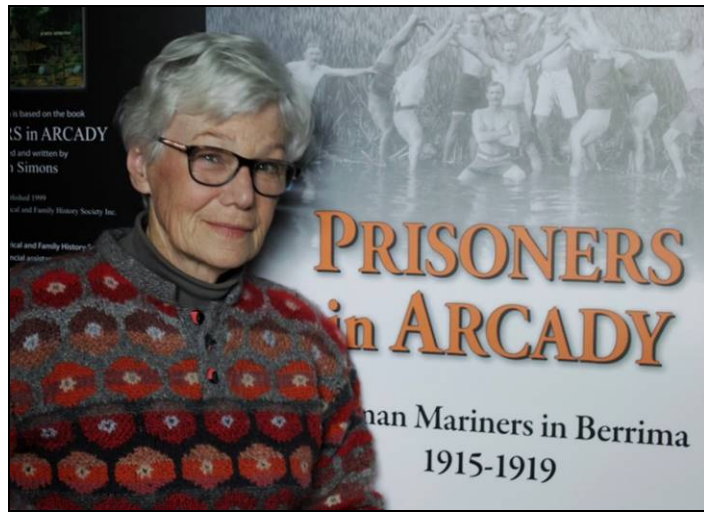
HIGHLY COMMENDED: Category INDIVIDUAL ACHIEVEMENT: Lyn Hall

On its website, M&G states that "Competition is most intense around individual achievement awards, and it's here where judges are often torn. Joe Eisenberg, long-time main man for [Maitland Regional Gallery](#) proved impossible to beat given his recent retirement from a long and dedicated career across two regional galleries and his commitment to building regional collections. Four volunteers from small museums were nominated, with Theodorus Bollen of [Griffith War Memorial Museum](#) coming up trumps. It was a tough competition and the judges chose to also Highly Commend the gracious Lyn Hall from [Berrima District Museum](#)".

Lyn Hall has been a volunteer with our Museum for over 11 years. Using her professional graphic design experience she manages, designs and produces

exhibitions, as well as all the Museum's marketing material. Her graphic design input to the Anzac Centenary fundraising program was instrumental in achieving community support for the project.

Lyn also makes an important on-going contribution to the photographic documentation of the museum's collection.



In addition to her artistic contribution, Lyn contributes to the overall Museum management and activities on a regular basis. Supportive of training and engaging volunteers, she was a major driver in the successful completion of the M&G Museums Standards Program and her continued participation and contribution to the management committee is highly valued.



Harlan Hall accepting winning IMAGinE Awards for *New Museum Gallery Extension* and *Cloud Stories* from Jennifer Barrett, Chair of M&G NSW Board, at Museums & Galleries NSW IMAGinE Awards 2015 held in Sydney on Friday 13 November.

IF YOU have not recently visited the Museum, now is the time to come and see what all the fuss is about.

Experience our stories and our history

The Story Centre Berrima District Museum
Open 10am-4pm WED to SUN
and every day of school holidays

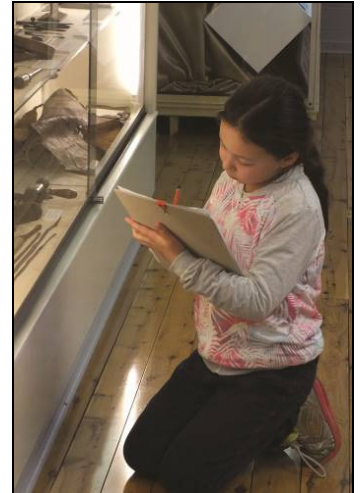
Berrima District Museum's visitors

From the middle of this year there has been a sharp upward trend in the number of visitors at the museum. This is most encouraging. It builds on the groundwork laid by the dedicated efforts of Bob and Gloria Williams over many years and is a great tribute to the project management skills of Harlan Hall, and the ongoing dedication of current manager, John Schweers, and all the committee members and volunteers.

Museum visitor numbers for mid 2015:

	adults	children	members
May	144	24	11
June	323	37	7
July	341	96	24

Some younger visitors to the museum this year are portrayed below here (with their parent's permission):



Museum visitor photos by Lyn Hall; compiled by P Morton

Berrima's Pugin church treasure

The first part of a history of Berrima's Catholic church was begun in last month's newsletter. It told of how work commenced in 1849 and, as the Church of St Scholastica, it opened in 1851. It was built to a design by English Gothic Revival architect Augustus Pugin. This history continues here.

Part 2 - the Berrima Church's Pugin connection

From 1838 the Berrima district's first Roman Catholic mission made use of a site, formerly occupied by the Berrima Stockade, on the southern side of the Wingecarribee River. Two huts on the site were donated by Charles Throsby to the mission. One was turned into a chapel where the first mass was celebrated in 1840 by Bishop John Bede Polding of Sydney. He was accompanied by Dean James Goold, head of the Campbelltown mission, who later became the first Catholic Bishop of Melbourne.

From 1840 a Catholic school was held in the other hut with an enrolment of 27 pupils. The first teacher was E Ryan. A school operated until the 1860s when the first public school opened in Berrima and both the Catholic and Anglican schools closed.

While the wooden huts served the district's Catholics for several years, a successor of Goold, Dean John Grant, was determined to erect something more substantial. The building of a church had already been mooted by Goold and Polding in 1840 and a subscription list started.

In 1846, Grant took the opportunity of a stopover at Berrima by Polding, then Archbishop of Sydney, to suggest that a permanent church be built on the site.

Polding not only agreed but supplied plans as well. These were of a totally original design by Augustus Pugin for a small medieval village church.

These plans were one of a batch that Polding had received from Pugin in 1842. Polding had returned to England in 1841 for a lengthy visit and was greatly impressed by Pugin who was building churches with stunning interiors filled with colour and imagery. Polding met with Pugin and requested designs for Australian Catholic buildings. In December 1842 Pugin despatched him a package including a design for the bell tower at St Mary's Cathedral, Sydney, and at least five designs for churches ranging in size and elaboration. All were original, rather than copies of his previous English or Irish designs. They were structured and equipped in accordance with Pugin's architectural, ecclesiological and liturgical stance.



Polding could have commissioned competent colonial architects to design his churches, but he had awakened to the full-blown Gothic revival, not just in architectural terms, but in the provision of an appropriate setting for a re-vitalised liturgy. Pugin designs included a comprehensive set of liturgical furnishings that were considered essential by revivalists, including Polding, for the celebration of mass and administration of the sacraments.

Numerous churches by Pugin were built in Catholic parishes around Australia, including at Balmain, Chippendale, Ryde and Parramatta, as well as in Brisbane and Tasmania.

The Catholics at Berrima in the 1840s were certainly most privileged to be endowed with one of Pugin's original small village churches.

Augustus Welby Northmore Pugin (1812-1852) had displayed a talent for Gothic design at an early age and, at age 15, he was entrusted to design the furniture for King George IV's refurbishment of Windsor Castle. His most celebrated commission was to design all the Gothic detail of the Palace of Westminster: not only the crockets and statues on the outside, but every detail of the interior, from the throne in the House of Lords to the inkwells in the House of Commons. His Palace designs included the exquisite detail on the tower now known to everyone as Big Ben.



Pugin converted to Catholicism in 1835 and from then, almost single-handedly, he gave the Gothic Revival a new seriousness. What he called Pointed or Christian Architecture became a moral crusade that went global, carried to every part of the world where English was spoken and churches were built, from Berrima to Bombay.

Despite the onset of insanity and early death at age 40, possibly caused by ointment containing mercury he rubbed on his eyes, Pugin is claimed to have done almost as much to shape modern ideas of the Victorian age as William Shakespeare.

St Scholastica Church opened in 1851

Within a few months of receiving the go-ahead from Archbishop Polding in 1846 for a Catholic church at Berrima, Dean Grant had collected 300 pounds in donations. His successor, Father William McGinty, invited Polding to Berrima to bless and lay the foundation stone in February 1849. Some 150 local residents attended the ceremony.

Regarding subscriptions, research by our archivist and historian Linda Emery reveals that the major contributor, promising the sum of 20 pounds, was publican Bryan McMahan, owner of the Berrima Inn in Jellore Street. A former soldier transported to NSW

for desertion, he came to Berrima as the overseer of one of the convict road gangs working in the district. Recognising the potential of the growing market town, he left his government position in the mid-1830s and built Berrima's first licensed inn. The other major contributors to the building fund were also publicans - Michael Doyle of Berrima, Redmond Connor of Sutton Forest and John Keighran from Bargo.

Builder William Munro was finishing the construction of Berrima's Holy Trinity Anglican Church when he secured the contract in 1849 to build St Scholastica. A Scottish immigrant, he had arrived in the colony in 1838 and began his working life in NSW as a house carpenter. His work in Berrima, also including major repairs to Berrima Court House, paved his to success and he became a leading Sydney architect.

The stone for the church came from the same quarry used for the building of Holy Trinity in Berrima. The new Catholic church opened in 1851 and was named St Scholastica, most likely chosen by Polding, who was a Benedictine monk. St Benedict and St Scholastica were brother and sister, said to be twins.

It served as the district's focus of Catholic worship until the 1870s when the railway towns of Mittagong, Bowral and Moss Vale developed, and Berrima went into decline. In the late 1880s the Berrima church was incorporated into the Moss Vale parish and its name was changed in 1891 to St Francis Xavier Church.

Being of significance as the only essentially unaltered Pugin-designed building in Australia, in 2008 it was placed on the NSW Heritage Register.

The Heritage Significance

The NSW Heritage Register describes the church at Berrima as consisting of a four-bay nave, buttressed at the corners, with north porch and a single bellcote astride the west gable, a two-bay chancel with diagonal buttressing to its east wall, and a sacristy abutting the chancel south wall.



It is constructed of ashlar sandstone and today has corrugated iron roofs. Nave and porch interiors are of ashlar sandstone, with the chancel and sacristy being plastered. The nave has an open timber roof with arch-braced collar tie trusses on arch-braced king posts. The floors are wooden. The chancel has a

plastered ceiling dating from the last quarter of the twentieth century. The chancel is equipped with stone sedilia (three recessed seats) and piscina (stone basin) as well as an Easter sepulchre recess.

With the exception of the corrugated iron roofs and the chancel, porch and sacristy ceilings, the entire structure is original, intact and unaltered. The present forward altar is original, as is the baptismal font (not by Pugin). All other furnishings date from the last decade of the nineteenth century.



Stone sedilia



Baptismal font

The church is situated on an open block with large mature European, Californian (*Monterey pine, Pinus radiata*) and native trees around its perimeter and some small shrubs and trees on the block.

Noted Pugin expert Brian Andrews points out that the design of St Scholastica was a totally original evocation of a small English medieval village church.

Andrews states that the quality of workmanship in the church reveals that its builder, Munro, was a very competent craftsman. One example is the tall slender lancet windows that light the nave and chancel. Those in the north, west and east walls of the nave have simple mouldings, whereas the paired lancets in the chancel north wall, as well as the triple lancets in the chancel east wall, have more complex mouldings. He says that this trinity of lancets has a subtle, almost imperceptible, Pugin touch. The central window is 5cm wider than the two flanking it, contributing to the overall balance and harmony of the composition.

St Francis Xavier Church remained in use until 1973 when it closed and, due to a paucity of care and maintenance, fell into neglect. However in 1984 it was reopened and has been substantially repaired since then. The revival of interest in its heritage has seen it become the focus of considerable attention.

It is open for mass, weddings and other sacraments through the Moss Vale Parish. A dedicated 'Friends of the Church' group manages the ongoing restoration and maintenance of this local heritage treasure.

*Compiled by P Morton
with assistance from Dympna Irwin*

It's Time . . .

Federation Clock, Bowral



Bowral Free Press and Berrima District Intelligencer Saturday 15 September 1900 page 3
Concerning Bowral.
BOWRAL, TOWN CLOCK.

The new single-dial clock has arrived in

Bowral and unless the opposition of residents be prompt, and successful, Bowral will soon have as its town clock what at every resident will agree with us in describing as an emphatically useless and un-ornamental ½-price of architecture. It will be practically hidden from view until you are right opposite to it, and it will never be heard as it cannot strike. Moss Vale may find some use for it.

Bowral Free Press and Berrima District Intelligencer Saturday 19 January 1901 page 2

The post office clock brings Bowral up to time. Everybody is delighted with it, and there is not a hamlet in the Berrima District but that will have implanted in the breasts of its inhabitants an ideal, which will prove incompatible till it also gets a post office clock. Now that Australia is a nation, and if the lead of Bowral be followed, the manufacture of Federal clocks would prove a profitable undertaking. The maker of the clock are Thwaites and Reid, of London, a firm of early associations with N.S.Wales, in that it supplied the clocks of the Victoria Barracks, Camden and Liverpool Churches, and elsewhere early in the past century.

Bowral Free Press and Berrima District Intelligencer Saturday 19 January 1901 page 2

We are informed by Mr. Smith, contractor, that in all probability our Town Clock will be set going this afternoon.

Bowral Free Press and Berrima District Intelligencer Saturday 26 January 1901 page 2

Concerning our Post Office clock, a local wag remarks, "It may be that the new clock is the only double-faced thing in Bowral that speaks the truth – but what in Heaven's name is the use of a clock which you can only see when you are within a few yards from it. Either the trees that obstruct it should be cut away or the clock."

J M Alcorn Memorial Clock, Moss Vale

Goulburn Evening Penny Post Tuesday 21 December 1937 page 7

DR. ALCORN MEMORIAL

Clock Placed in Position

Mr. Franklin, contractor for supplying the memorial clock to be fixed in the monument opposite the post office, Moss Vale, commenced work on the installation yesterday morning, and anticipated that the timepiece would be in

operation today. The clock will be electrically controlled, and fitted with a battery, which will be automatically charged. This battery will commence to function immediately there is a failure in the electric light service, and is of sufficient capacity to operate the clock continuously for 30 hours if required. Such a likelihood is very remote. Mr. Franklin states that it will be possible to regulate the clock to within a half-minute a week when erected, and a final adjustment at the end of that time will ensure perfect operation.



Soldiers' Memorial Clock, Mittagong

Robertson Advocate Friday 26 November 1920 page 2

Mittagong's Town Clock

The Mittagong Town Clock is now an accomplished fact. On Saturday night last the Soldiers' Memorial was the centre of attraction for visitors and town and district residents. The clock was in position, and beamed brightly on all and



sundry from its four illuminated faces, whilst it steadily marked the time without the tired tick of the old grandfather clock of yore.

Robertson Advocate Tuesday 21 December 1920 page 2

Mittagong War Memorial UNVEILING CEREMONY.

The unveiling of the War Memorial at Mittagong on Saturday afternoon last, together with the sports and sale of goods at the lake grounds, was an unqualified success. The State Governor, Sir Walter Davidson, sent an apology stating that prior engagements, prevented his attendance and expressing his appreciation of the efforts of the residents of Mittagong and district to perpetuate the memory of those who had answered the call for service in the late war.

Berrima District Historical & Family History Society Inc

PO Box 131 Mittagong NSW 2575 ☎ Telephone / Fax (02) 4872 2169
email: bdhsarchives@gmail.com ☎ web: www.berrimadistricthistoricalsociety.org.au

- ARCHIVES:** Cnr Old Hume Highway and Bowral Road, MITTAGONG.
OPEN: Mondays, Tuesdays 10am-4pm and Saturdays 10am-1pm. Closed Public Holidays.
Library collection contains reference books, journals and newsletters of other societies.
- MUSEUM:** Market Place, Berrima. Tel: 02 4877 1130. Email: bdmuseum@bigpond.com
OPEN: 10.00am to 4.00pm, Wednesdays to Sundays, and during school and public holidays.
Museum Committee: John Schweers (Manager, Tour Bookings), Harlan Hall (Project Manager),
Lyn Hall (Graphics, Exhibitions), Sylvia Carless (Roster), Chris Moore (Artist, Children's programs),
Judith Green (Procedures), Michele Woods (Exhibition content), Harold Wall (Human Resources).
- MEMBERSHIP:** Any person wanting to join the Society may do so at any stage during the year by completing a form
and paying the appropriate fee. Joining Fee \$10.00 - Single \$25.00 - Family \$35.00.
- AFFILIATIONS:** Royal Australian Historical Society, NSW Association of Family History Societies,
Museums Australia Inc & Regional Chapter.

If undelivered return to:
Berrima District Historical & Family History Society Inc
PO Box 131
MITTAGONG NSW 2575
Berrima District Historical & Family History Society Inc
Newsletter
Print Post Approved
PP100001055

SURFACE
MAIL

POSTAGE
PAID
AUSTRALIA

PATRON:	Mayor of Wingecarribee Shire: Councillor Larry Whipper		
President:	Mr Bruce MOORE	4872 3762	actmoore@bigpond.net.au
Snr Vice President:	Mrs Linda EMERY	4883 4271	lemery75@southernphone.com.au
Jnr Vice President:	Mrs Leonie KNAPMAN	4871 1804	
Hon Secretary:	Mr Philip MORTON	4883 7862	
Hon Treasurer:	Mrs Patricia DORIS	4872 3313	
Archivist:	Mrs Linda EMERY	4883 4271	
Museum Manager:	Mr John SCHWEERS	4872 1660	schweers@hn.ozemail.com.au
Membership:	Mrs Peg HARVEY	4861 4521	
Newsletter Editor:	Ms Lavinia FORD	4869 4038	
Research Officer:	Mr Max ROGERS	4861 3526	robert.rogers2@bigpond.com

Management Committee: President, Vice Presidents, Secretary, Treasurer, Museum Manager, Research Officer,
plus members Peg Harvey (Minute Secretary), Carolyn Hutton, Denyse Barker, Robyn Arrowsmith and Ros Dale

Newsletter proudly supported by: **Southern Highland News**
Springetts Arcade